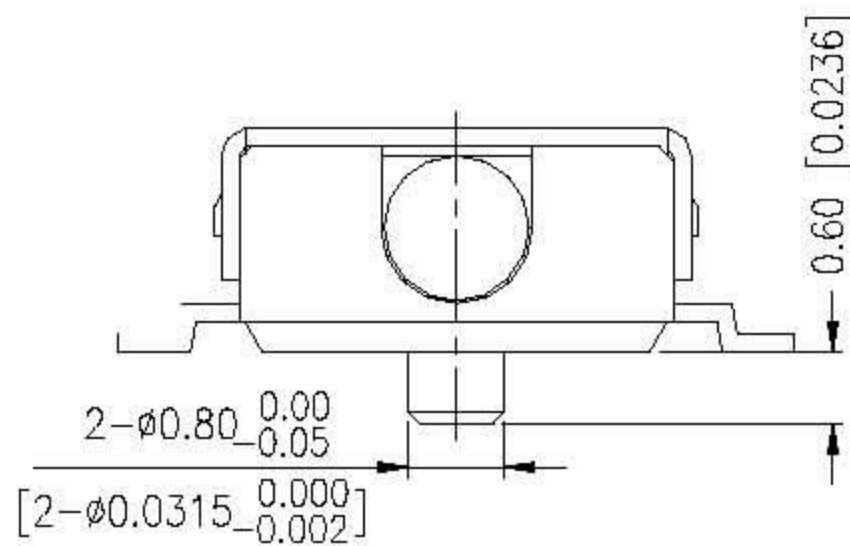
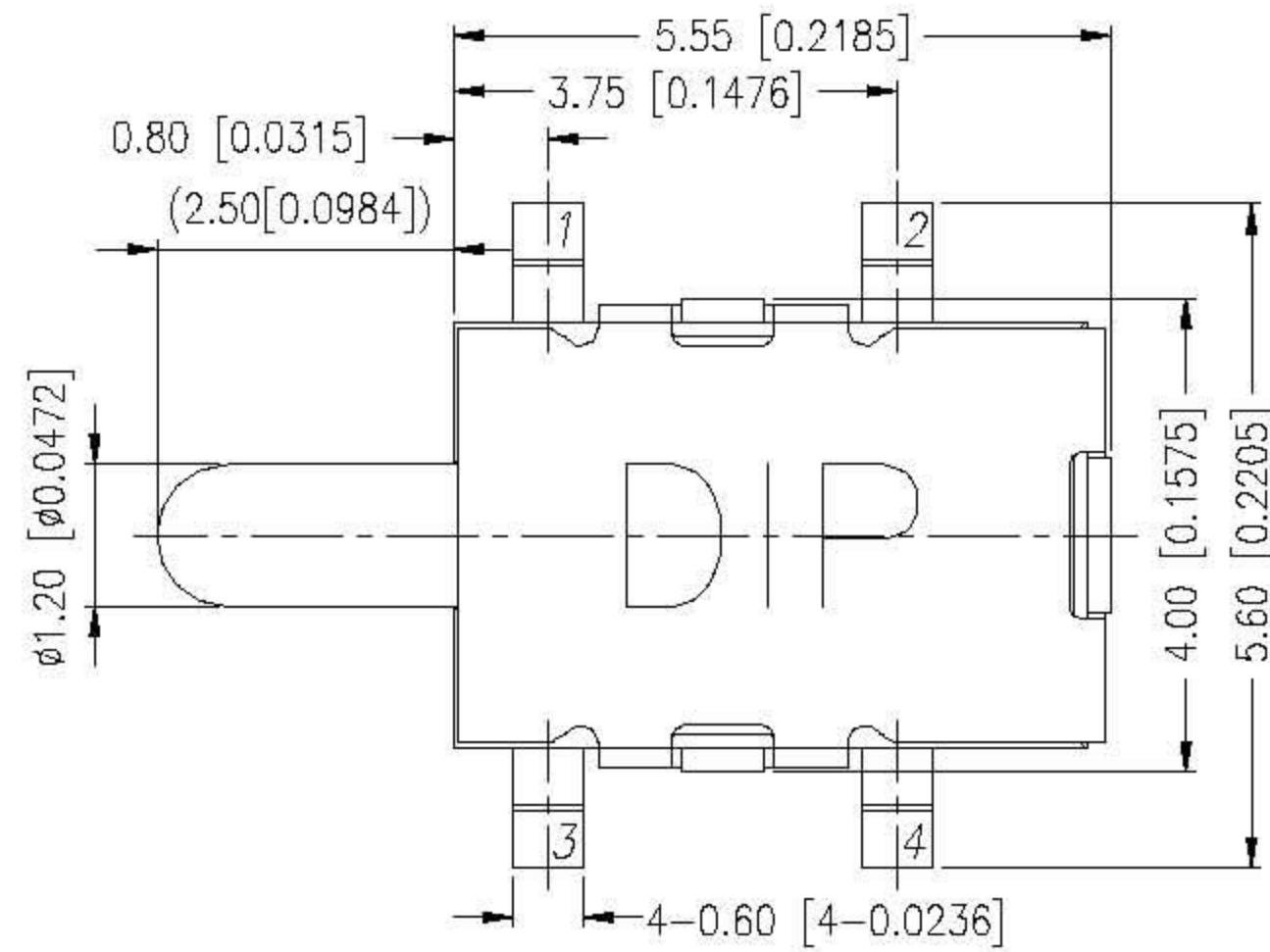
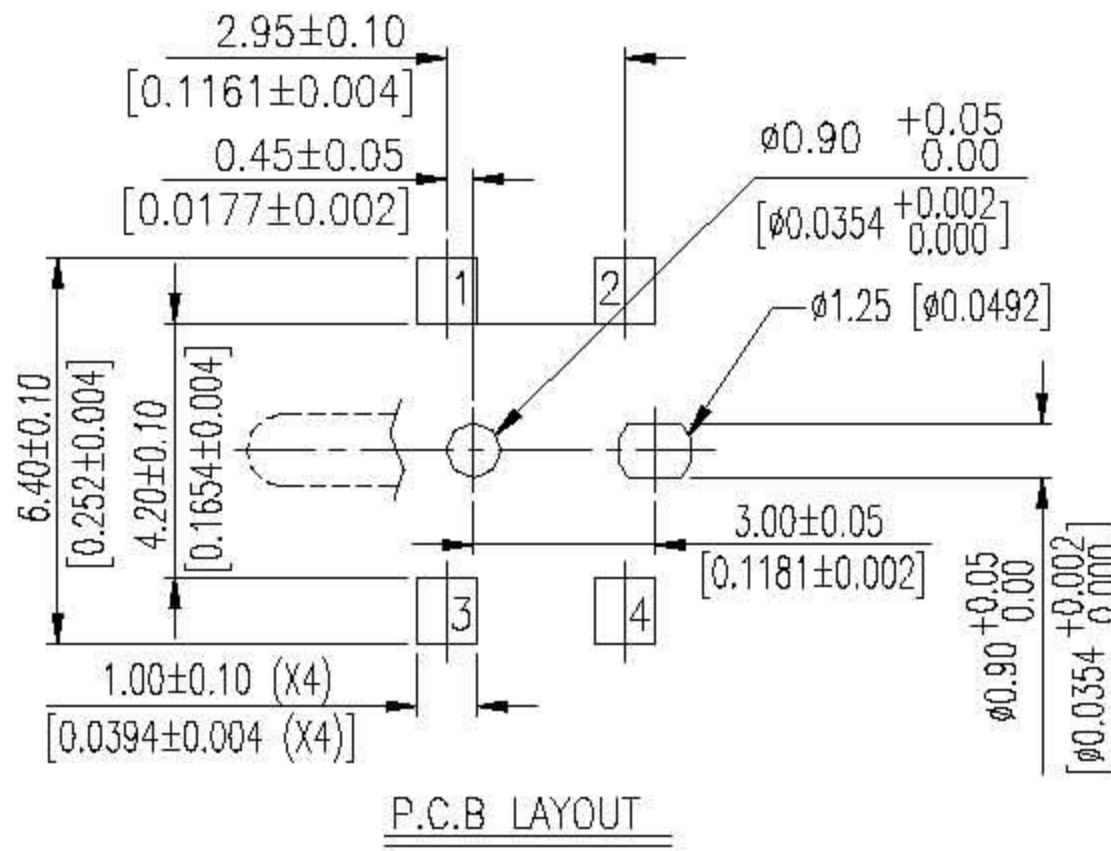


FTE SERIES

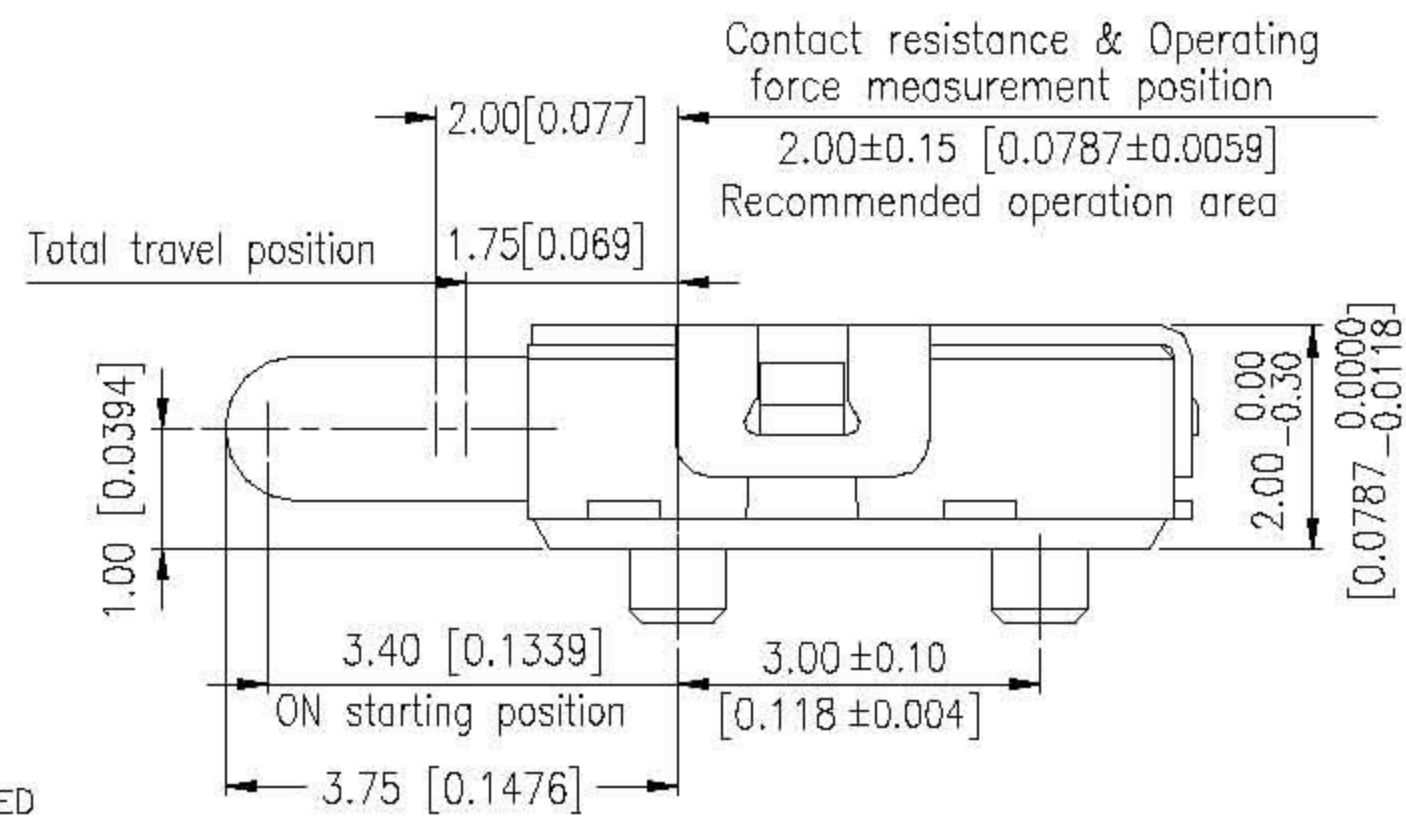


DIMENSIONS

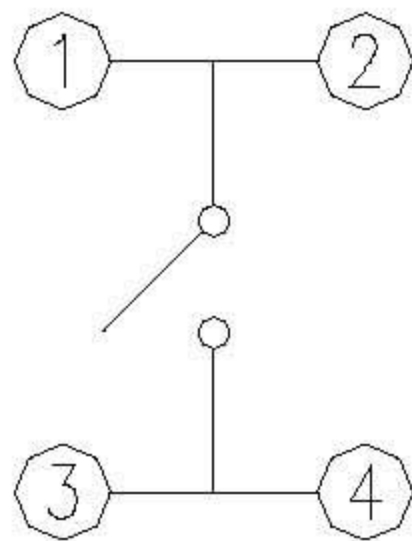
FTE-V



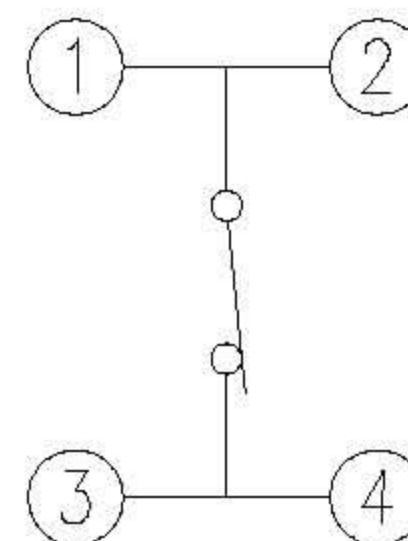
NOTE:
1. ALL DIMENSIONS ARE IN MILLIMETERS, BRACKETED DIMENSIONS ARE IN INCHES.
2. GENERAL TOLERANCES MAX. ±0.20mm.



CIRCUIT DIAGRAM



FTE-2C



FTE-3C

HOW TO ORDER

FTE - C -V -

- Package :
T/R = Tape & Reel
- V = Lead Free Solderable
- = With Silver Plated
- A = With Gold Plated
- C = With Post

CIRCUIT DIAGRAM	
2	3

Detector Switch

SPECIFICATION

△MECHANICAL

Operation Force: 50gf max.
 Operation Temperature Range: -10°C to +60°C.
 Storage Temperature Range: -20°C to +70°C.

△ELECTRICAL

Electrical Life: 100,000 cycles
 Rating: 1mA,5VDC
 Contact Resistance: 2Ω max
 Insulation Resistance: 100MΩ min
 Dielectric Strength: 100VAC / 1 minute

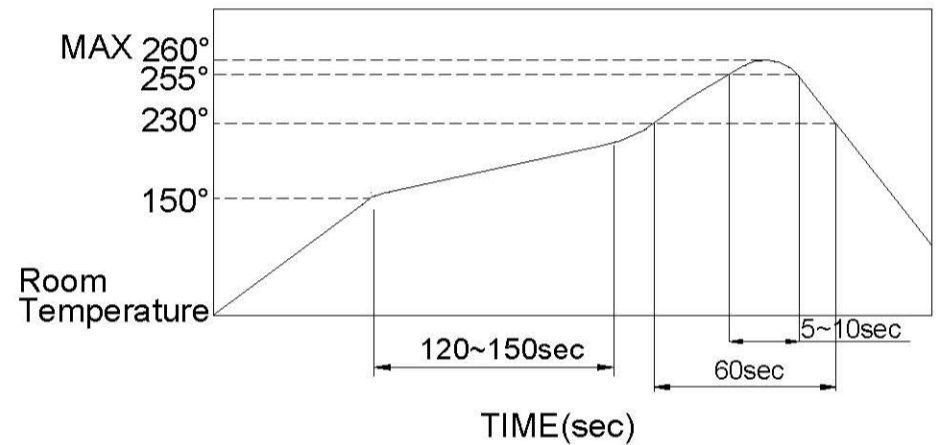
MATERIAL

△COVER: Stainless Steel
 △BASE: UL94V-0 Nylon High-Temp Thermoplastic.
 Color: Black
 △STEM: UL94V-0 Nylon High-Temp Thermoplastic.
 Color: Black
 △CONTACT: Stainless with silver plated
 Stainless with Au plated
 △TERMINAL : Brass with silver plated
 Brass with Au plated
 △SPRING : Piano Wire.

SOLDERING PROCESS

△HAND SOLDERING: Use a soldering iron of 30 watts, controlled at 350°C approximately max 5 seconds while applying.
 △REFLOW SOLDERING: When applying reflow soldering, the peak temperature or the reflow Oven should be set at 260°C max.
 △Reflow Temperature Profile:

△Temperature Profile :



PACKING

Part Number	Number Per TUBEI	Number Per Reel
FTE	-	3000

